



# TOBISHIMA Island Cycling Map

Eleventh edition



## Cycling Map of Akinada Tobishima Sea Route

### Cycling manners

- Bicycles should **keep left**. Please go in single file.
- When you are allowed to go through sidewalks, **go with reduced speed giving priority to pedestrians**.
- Please follow traffic lights and traffic signs.
- **At the intersection, please take a hook turn**. If there is no bicycle crossing zone at the pedestrian crossings, please walk while pushing your bicycle.
- **Drunken driving is absolutely prohibited**.
- Refrain from **listening to music with earphones, using a smartphone, or holding an umbrella**, etc. while cycling.
- **Always put on your helmet** for your safety.
- When it gets dim, please **turn the bike lights on** to let others around you notice. (Same as in the tunnels). Also, to make the vehicles behind you notice, please put on a **red tail light or a reflector**.
- Islands have many narrow roads, so please **moderate your speed** in order to prevent collision accidents.

### Tourism information

**Kure City Tourist Information Center**  
TEL (0823) 23-7845 FAX (0823) 23-7850

**Kure City Tourism Promotion Division**  
TEL (0823) 25-3309 FAX (0823) 25-7592

Kure City Tourism homepage "Kure Navi" <http://www.city.kure.lg.jp/life/3/>  
Kure Area Tourism Information <http://kuremachidiary.jp/>  
Kure Tourism Association homepage <http://www.kure-kankou.jp/>  
Kure City Tourism and Regional promotion Application "Mai Kure" <https://www.city.kure.lg.jp/soshiki/67/mykure-kaiinbosyu.html>



This cycling map is made of stone paper which is strong against water and friendly to the environment. Since stone paper, whose main raw material is inorganic mineral powder extracted from stone, does not use wood chips, valuable forest resources can be protected. In addition, there are no processes such as drying or washing during the production. Strong acids, alkalis, and bleaching agents are also not used. Therefore, there is no pollution in the rivers and seas with wastes such as wastewater and waste gas.



Published by Kure City

### Sea Route Information

- ① Mitaka (Etajima) ~ Hiroshima** <40min.>  
with Cyruise Pass  
● Mitaka ~ Hiroshima (Adult) ¥690 (Child) ¥350 (Including Bicycle)  
Inquiry : Setouchi Sealine Co., Ltd. ☎ (082) 254-1701
- ② Kirikushi (Etajima) ~ Hiroshima** <30min.>  
with Cyruise Pass  
● Kirikushi ~ Hiroshima (Adult) ¥470 (Child) ¥240 (Including Bicycle)  
Inquiry : Kamimura Kisen Co., Ltd. ☎ (082) 251-6020
- ③ Hiroshima ~ Kure ~ Matsuyama**  
with Cyruise Pass  
● Hiroshima ~ Kure (Adult) ¥1,000 (Child) ¥500 (Including Bicycle)  
● Kure ~ Matsuyama (Adult) ¥4,000 (Child) ¥2,000 (Including Bicycle)  
● Hiroshima ~ Matsuyama (Adult) ¥5,000 (Child) ¥2,500 (Including Bicycle)  
Inquiry : Setonaikai Kisen Co., Ltd. ☎ (082) 253-1212  
Ishizaki Kisen Co., Ltd. ☎ (089) 953-1003
- ④ Tennou (Kure Portopia) ~ Kirikushi (Etajima)** <12min.>  
with Cyruise Pass  
● Tennou ~ Kirikushi (Adult) ¥340 (Child) ¥170 (Including Bicycle)  
Inquiry : Sakurakaiun Co., Ltd. ☎ (0823) 38-8988
- ⑤ Koyo (Etajima) ~ Kure** <20min.>  
with Cyruise Pass  
● Koyo ~ Kure (Adult) ¥450 (Child) ¥230 (Including Bicycle)  
Inquiry : Setouchi Sealine Co., Ltd. ☎ (082) 254-1701

- ⑥ Kure ~ Akizuki (Etajima)** <16min.>  
with Cyruise Pass  
● Kure ~ Akizuki (Adult) ¥530 (Child) ¥260 (Including Bicycle)  
Inquiry : Bunker Supply Co., Ltd. ☎ (082) 251-4354  
\*Currently out of service
- ⑦ Akashi (Osakamijima) ~ Ocho (Osakishimajima)** <15min.>  
with Cyruise Pass  
● Akashi ~ Ocho (Adult) ¥370 (Child) ¥190 (Including Bicycle)  
Inquiry : Habu Shosen Group ☎ (0845) 22-1337
- ⑧ Akitsu ~ Oonishi (Osakikamijima)** <35min.>  
with Cyruise Pass  
● Akitsu ~ Oonishi (Adult) ¥400 (Child) ¥260 (Including Bicycle)  
Inquiry : Akitsu Ferry Co., Ltd. ☎ (0846) 45-0462
- ⑨ Takehara ~ Tarumi or Shiromizu (Osakikamijima)** <25 to 30min.>  
with Cyruise Pass  
● Takehara ~ Tarumi (Adult) ¥390 (Child) ¥250 (Including Bicycle)  
● Takehara ~ Shiromizu (Adult) ¥400 (Child) ¥250 (Including Bicycle)  
Inquiry : Sanyo Shosen Co., Ltd. ☎ (0846) 22-2133  
Osaki Kisen Co., Ltd. ☎ (0846) 22-2390
- ⑩ Imabari ~ Okamura (Okamurajima)** <80min.>  
with Cyruise Pass  
● Imabari ~ Okamura (Adult) ¥940 (Child) ¥570 (Including Bicycle)  
Inquiry : Okamura Port Office ☎ (0897) 88-2252

- ⑪ Imabari or Munakata (Omishima) ~ Kinoe (Osakikamijima)**  
Munakata (Omishima) ~ Okamura (Okamurajima)  
with Cyruise Pass  
● Imabari ~ Munakata (Adult) ¥870 (Child) ¥530 (Including Bicycle)  
● Imabari ~ Kinoe (Adult) ¥1,030 (Child) ¥620 (Including Bicycle)  
● Munakata ~ Kinoe (Adult) ¥440 (Child) ¥320 (Including Bicycle)  
● Munakata ~ Okamura (Adult) ¥580 (Child) ¥400 (Including Bicycle)  
Inquiry : Omishima Blue Line Co., Ltd. ☎ (0898) 32-6713
- ⑫ Tadanoumi ~ Ookunojima ~ Sakari (Omishima)** <15min./15min.>  
with Cyruise Pass  
● Tadanoumi ~ Sakari (Adult) ¥400 (Child) ¥250 (Including Bicycle)  
● Tadanoumi ~ Ookunojima (Adult) ¥390 (Child) ¥240 (Including Bicycle)  
● Ookunojima ~ Sakari (Adult) ¥390 (Child) ¥240 (Including Bicycle)  
Inquiry : Omishima Ferry Co., Ltd. ☎ (0846) 22-6199
- ⑬ Imabari ~ Kooge ~ Ooge ~ Munakata ~ Okamura (Okamurajima)** <58min.>  
with Cyruise Pass  
● Imabari ~ Ooge ~ Kooge ~ Okamura (Adult) ¥940 (Child) ¥570 (Including Bicycle)  
● Imabari ~ Munakata (Adult) ¥860 (Child) ¥520 (Including Bicycle)  
● Ooge ~ Kooge (Adult) ¥260 (Child) ¥200 (Including Bicycle)  
● Ooge ~ Okamura (Adult) ¥300 (Child) ¥220 (Including Bicycle)  
● Kooge ~ Okamura (Adult) ¥260 (Child) ¥200 (Including Bicycle)  
Inquiry : Okamura Port Office ☎ (0897) 88-2252



You can save money with Cyruise Pass!!

Cyruise Pass is a card that gives you a discount when you board a boat with your bicycle. No issuing fee is charged.

#### How to use.

- Just ask a PASS issuing office for "Setouchi Cyruise PASS".
- Ask the office to write down the starting date of use.
- Valid for 3 days. You can get a discount for the designated routes and can get discount services at the affiliated shops.
- ※ Please show your PASS when you board the boat.
- Please note that the payment method differs depending on the route.
- Please ask the shipping line operators about the detailed discount amount.

#### Main PASS Issuing Offices around Kure City

- Kure City Tourist Information Center
- 7-ELEVEN Kure Chuo Sanbashi Terminal Branch
- Tobishima Sea Route Ocho Port
- Tobishima Sea Route Okamura Port

#### Other Main PASS Issuing Locations

- Ishizaki Kisen Co., Ltd. (Matsuyama Tourism Port Terminal)
- Grand Prince Hotel Hiroshima
- Sunrise Itoyama (Imabari City)

See the homepage below for the details of designated routes or discounts.  
<https://www.tb.mlit.go.jp/chugoku/kankou/cycle.html>

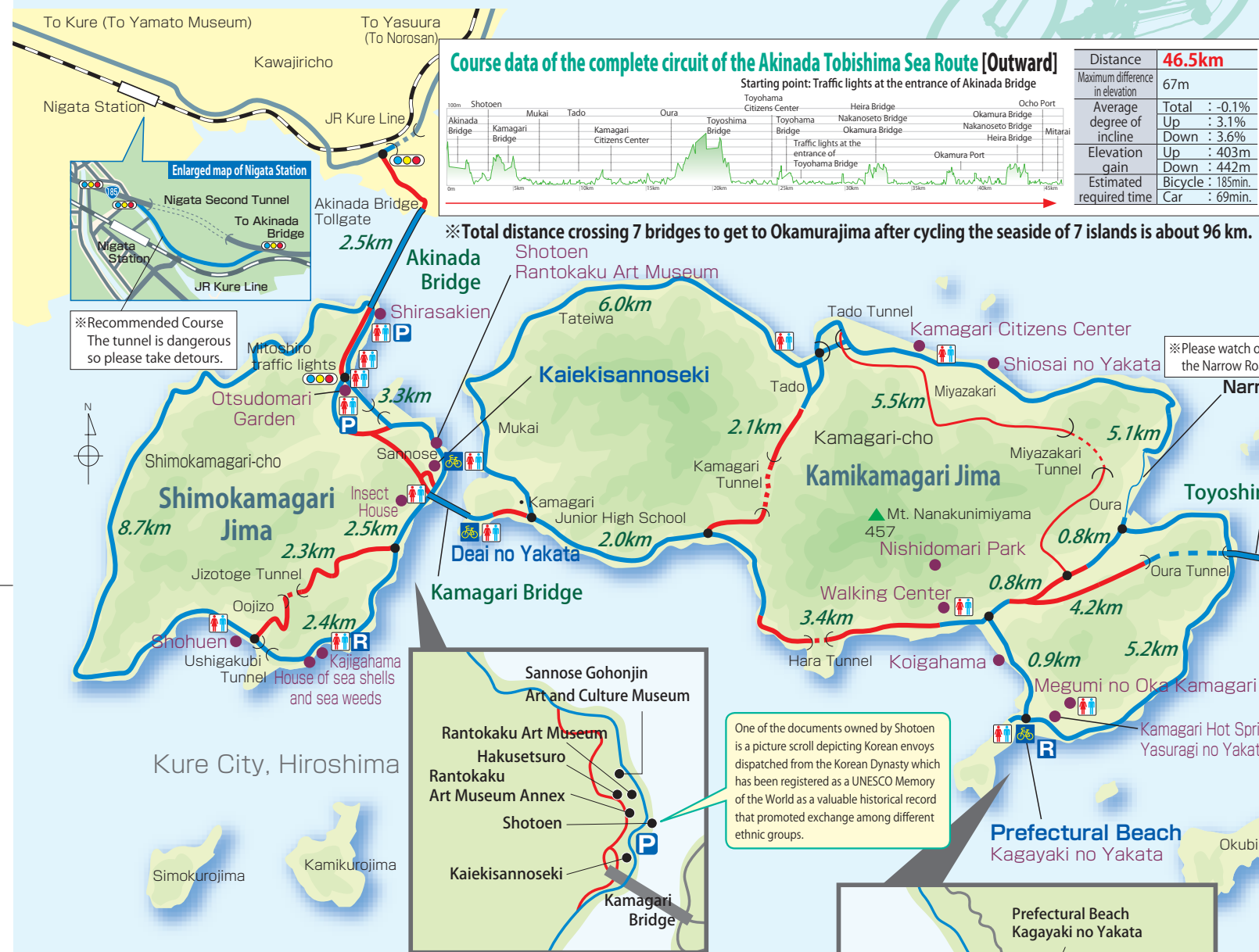
※ Please confirm with the above homepage since timetables or fare are subject to change.

※ Arrival time may be delayed due to the weather and other reasons.



# Seven islands, seven bridges

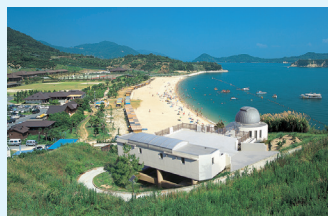
## Refreshing cycling



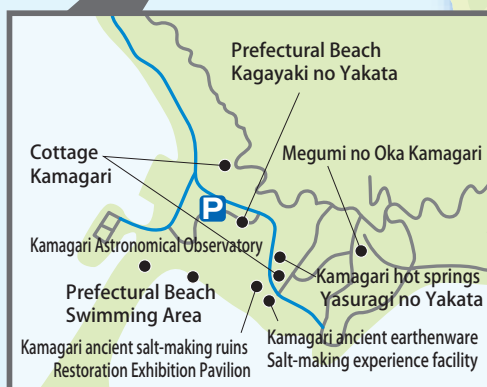
Rantokaku Art Museum (Shimokamagari Jima)



Area around Shotoen (Shimokamagari Jima)



Prefectural Beach (Kamikamagari Jima)



Kamagari area landmarks and facilities

**Information of Cycle Station** Simple tools and bicycle pumps are available for rental at Cycle Stations.



Kaiekisannoseki (Shimokamagari Jima)  
☎ (0823) 70-8282



Deai no Yakata (Kamikamagari Jima)  
☎ (0823) 68-0120



Prefectural Beach Kagayaki no Yakata (Kamikamagari Jima)  
☎ (0823) 66-1177



Mitarai Rest Station (Osakishimajima)  
☎ (0823) 67-2278



Yutaka umi no eki Tobishimakan (Osakishimajima)  
☎ (0823) 66-5311

**Shimokamagari Jima Kamikamagari Jima Toyoshima Osakishimajima Okamurajima**  
**Course data of the complete circuit**  
The cycling course on the Akinada Tobishima Sea Route has few ups and downs and less traffic, allowing even beginners to fully enjoy cycling. There is only one traffic light (Mitoshiro, Shimokamagari Jima). Refresh yourself by cycling at your own pace while viewing the beautiful islands and feeling the comforting sea breeze in Setouchi.

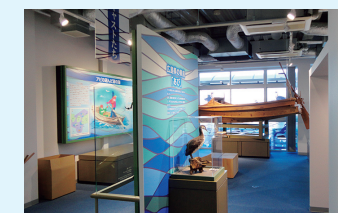
Shimokamagari Jima Circuit Course (Counterclockwise)	Kamikamagari Jima Circuit Course (Counterclockwise)	Toyoshima Circuit Course (Counterclockwise)	Osakishimajima Circuit Course (Counterclockwise)	Okamurajima Circuit Course (Counterclockwise)
Starting from Mitoshiro traffic lights	Starting from Kamagari Junior High School	Starting from traffic lights at the entrance of Toyoshima Bridge	Starting from traffic lights at the entrance of Toyoshima Bridge	Starting from traffic lights at the entrance of Okamura Bridge
Distance <b>14.4km</b>	Distance <b>22.6km</b>	Distance <b>9.4km</b>	Distance <b>19.2km</b>	Distance <b>8.9km</b>
Maximum difference in elevation 15m	Maximum difference in elevation 38m	Maximum difference in elevation 11m	Maximum difference in elevation 15m	Maximum difference in elevation 23m
Average degree of incline Total : 0% Up : 2% Down : 2.2%	Average degree of incline Total : 0% Up : 2.6% Down : 2.9%	Average degree of incline Total : 0% Up : 2.1% Down : 1.9%	Average degree of incline Total : 0% Up : 1.9% Down : 2.0%	Average degree of incline Total : 0% Up : 2.5% Down : 2.5%
Elevation gain Up : 63m Down : 66m	Elevation gain Up : 159m Down : 164m	Elevation gain Up : 33m Down : 31m	Elevation gain Up : 67m Down : 70m	Elevation gain Up : 57m Down : 57m
Estimated required time Bicycle : 55min. Car : 21min.	Estimated required time Bicycle : 1 hour 29 min. Car : 34min.	Estimated required time Bicycle : 37min. Car : 14min.	Estimated required time Bicycle : 1 hour 16 min. Car : 29min.	Estimated required time Bicycle : 36min. Car : 13min.



Mitarai townscape (Osakishimajima)



Mikan Message Museum (Osakishimajima)



Red-Throated Divers Exhibition Room (Toyoshima)

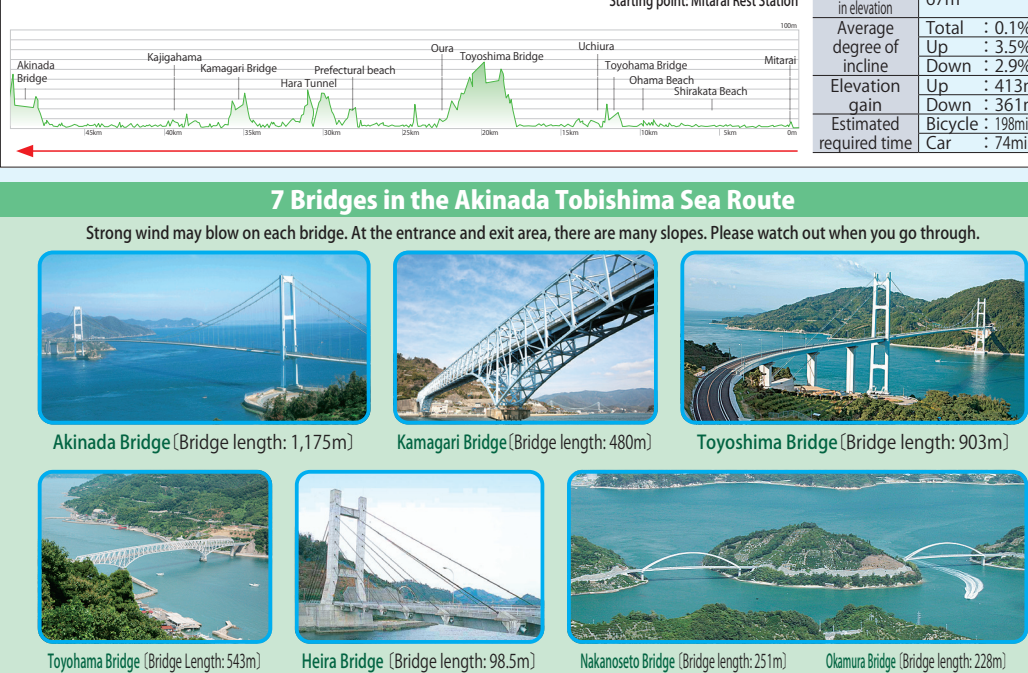


Okamura Bridge Prefectural boundary



### 7 Bridges in the Akinada Tobishima Sea Route

Strong wind may blow on each bridge. At the entrance and exit area, there are many slopes. Please watch out when you go through.



**Kure, a city of Japan Heritage.**  
A distant place where men survived rough waves to achieve dreams  
~ The Kitamae-Bune Port of Call and Residences of Ship Owners ~



★ = Cultural Properties included in the Japan Heritage

**Harukichi Nakamura**  
From Mitarai  
Known as an adventure tourist and Japan's first achiever of "a round-the-world trip with a bicycle"  
Many bicycle lovers visit this monument.



Monument of Harukichi Nakamura (Tenmangu Shrine)